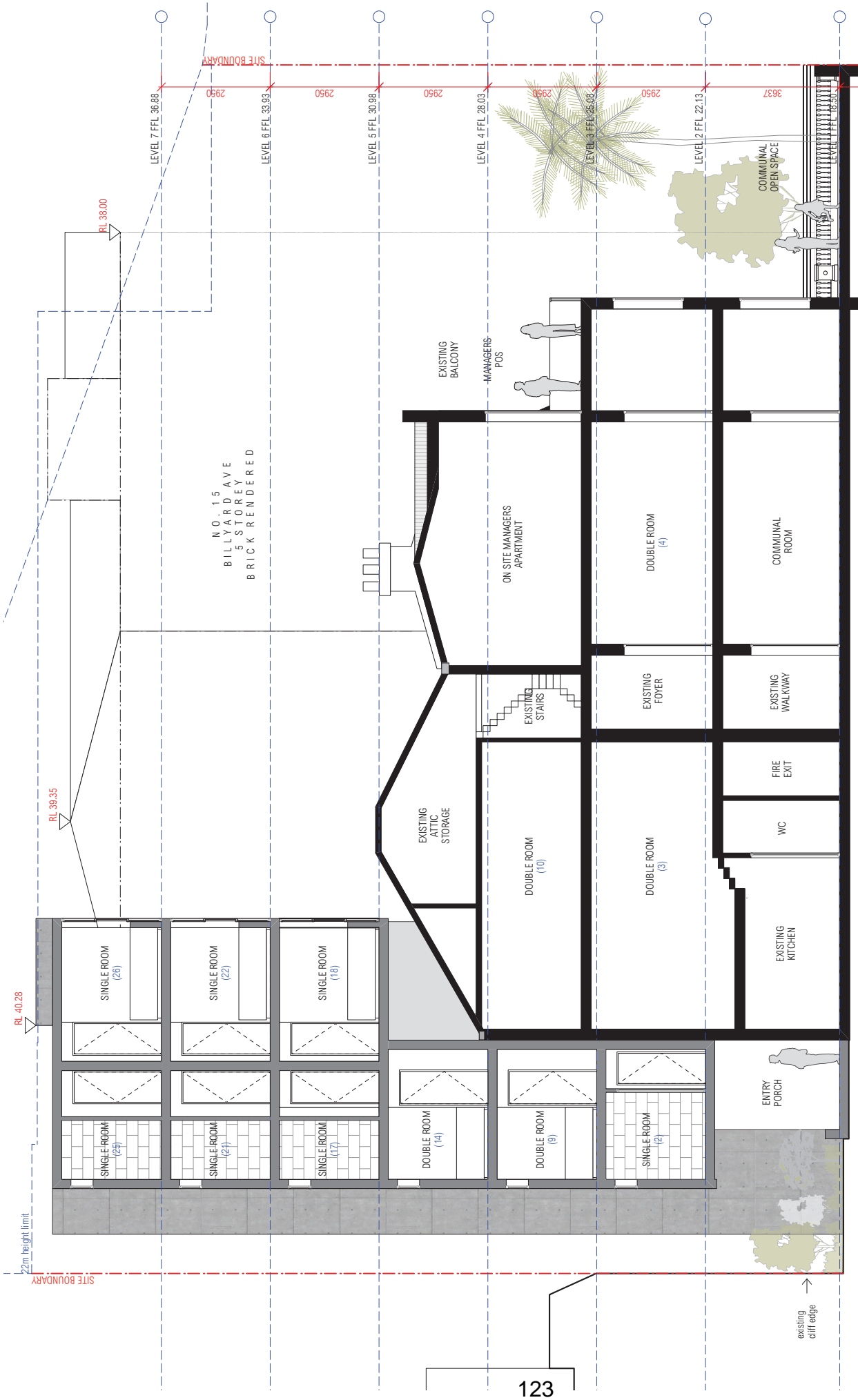


# **Attachment A3**

**Selected Drawings - Sections**





01 SECTION AA - PROPOSED  
1:100 @ A3

notes	rev	date	amendment	rev	date	amendment	rev	date	amendment	location	project	drawing	stage	project no.	draw no.	
all work to be carried out in accordance with local, state and federal council requirements. Issued to consultants + clients. Issued to consultants + clients. Issued to consultants + clients. Issued to consultants + clients. Issued to consultants + clients. Issued to consultants + clients.	H	20/02/21	Issued to consultants							17 BILLYARD AVENUE at ELIZABETH BAY	BOARDING HOUSE	SECTION AA - PROPOSED 1:100	DA	1083	120A	
	J	30/07/21	Issued to consultants + clients								JOHN POOLEY	SECTION - CONTEXT	TW	19/10/21	revisions	
	K	05/09/21	Issued to consultants										IH			N
	L	25/09/21	Issued to consultants													
	M	12/10/21	Issued to council - DA submission													
	N	19/10/21	Issued to council - DA submission													

**environa studio**  
 224 fliley st surry hills 2010  
 t: 02 9241 0000  
 w: www.environastudio.com.au  
 architects registration number 6239



01 SECTION BB - PROPOSED  
1:200 @ A3

notes	rev	date	amendment	rev	date	amendment
all work to be carried out in accordance with local, state and federal codes and conditions of council approval. All dimensions are in millimetres unless otherwise stated. Dimensions are to be taken from the finished site measure before starting work. Refer all discrepancies to the architect.	H	20/02/21	issued to consultants			
	J	30/07/21	issued to consultants			
	K	05/09/21	issued to consultants + clients			
	L	25/09/21	issued to consultants			
	M	12/10/21	issued to council - DA submission			
	N	19/10/21	issued to council - DA submission			

project	BOARDING HOUSE	location	17 BILLYARD AVENUE	drawing	SECTION BB - PROPOSED 1:200	stage	DA	project no.	1083	draw no.	121
architect	JOHN POOLEY	at	ELIZABETH BAY	drawing	SECTION - CONTEXT	checked	TW	date	19/10/21	revision	N

**environa studio**  
 224 fliley st surry hills 2010  
 t: 02 9211 0000  
 w: www.environastudio.com.au  
 architects registration number 6239



N O . 1 5  
 B I L L I A R D A V E  
 5 S T O R E Y  
 B R I C K R E N D E R E D

01 SECTION BB - PROPOSED  
 1:100 @ A3

notes	rev	date	amendment	rev	date	amendment	project	location	drawing	stage	project no.	draw no.						
all work to be carried out in accordance with local, state and conditions of council. site measure before starting work. refer all discrepancies to the architect.	H	20/02/21	issued to consultants				<b>enviro studio</b> 224 fliley st surry hills 2010 t: 02 9211 0000 w: www.envirostudio.com.au architects registration number 6239	<b>BOARDING HOUSE</b> at <b>ELIZABETH BAY</b>	<b>SECTION BB - PROPOSED 1:100</b> drawing <b>SECTION - DETAIL</b>	<b>DA</b> checked <b>TW</b>	<b>1083</b> d/b <b>19/10/21</b>	<b>121A</b> revision <b>N</b>						
	J	30/07/21	issued to consultants + clients															
	K	05/09/21	issued to consultants															
	L	25/09/21	issued to consultants															
	M	12/10/21	issued to council - DA submission															
	N	19/10/21	issued to council - DA submission															